

Accessories



RAMSET Magnetic Lock
Secures the gate(s) closed.



RAMSET ILD-24S Loop Detector
A safety device that stops the gate from closing on a vehicle.



V Groove Wheels
Solid steel and UHMW wheels available.



RAMSET Fire Box
Allows the fire department to open your gate in the case of an emergency.



RAMSET BBS-Battery Back-Up System
Opens your gate when power is lost.



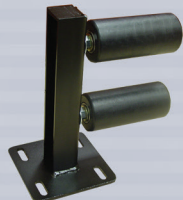
Post Mounts
1/4" angle iron flats.
3/16" square tubing legs.
Used to mount the operator off the ground.



Key Switch Box
Suitable for use on entry doors where access is restricted by a key.



Guide Rollers
Heavy duty UHMW rollers available in various lengths.



Adjustable Guide Roller

Heavy duty UHMW rollers adjust to fit any gate.



RPI (Ramset Power Inverter)
Maintains power to your operator and accessories when the main power is lost. 750W output.



Keypad
1,024 Codes
5,112 Event Log
LCD Display
7-Day Timer
Time Zones
Latching Stainless Steel Faceplate



Goose Necks
Square - 16 ga.
Available in 48" padmount or 66" in-ground. Used for mounting keypads, phone entry systems, card readers...etc.



www.ramsetinc.com

Easy Installation

Heavy Duty

Reliable

Low Maintenance



RAM 100
Residential
Commercial

RAM 1000
Commercial
Industrial



RAM 5500
Commercial
Industrial



DISTRIBUTED BY:

--	--

10-Year Warranty Residential

7-Year Warranty Commercial

SPECIFICATIONS

MAXIMUM GATE WEIGHT: 700 lbs
MAXIMUM GATE TRAVEL: 20'
GATE TRAVELING SPEED: Approx. 1' per sec.
CYCLES: Continuous SHIPPING WEIGHT: 110 lbs
OPERATING TEMPERATURE: -10° F to 160° F

Electric Motor

1/2 Hp, 120 VAC 4.5 amp
50/60Hz. with high speed ball bearings and resettable overload button.

Heavy Duty Worm Gear

Lubricated in an oil bath for smooth and quiet operation.

Limit Switches

Mechanical adjustment for accurate gate stop settings.

Cover

High-impact resistant charcoal gray polyethylene.

Cover Dimensions

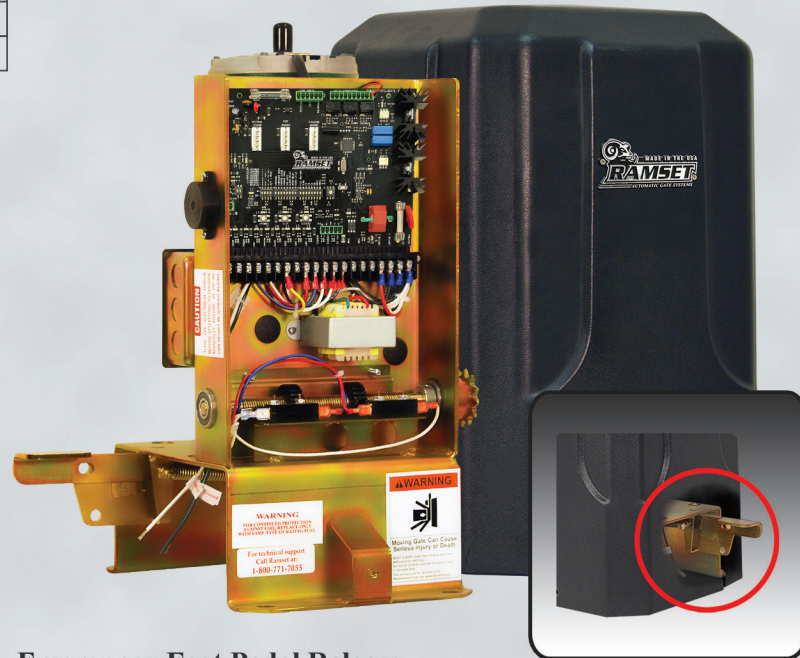
H: 22" L: 14 1/2" W: 15"

Finish

Gold/Zinc plated to inhibit corrosion.

RAM 100

Residential / Commercial



Emergency Foot Pedal Release

This mechanism disengages the gate from the operator to allow easy manual opening and closing of the gate during power outages and emergencies.

SPECIFICATIONS

MAXIMUM GATE WEIGHT: 2500 lbs
MAXIMUM GATE TRAVEL: 45'
GATE TRAVELING SPEED: Approx. 1' per sec
CYCLES: Continuous SHIPPING WEIGHT: 135 lbs
OPERATING TEMPERATURE: -10° F to 160° F

Electric Motor

1 Hp, 110 VAC. 9.4 amp.
50/60Hz. with high speed ball bearings and resettable overload button.

Heavy Duty Worm Gear

Lubricated in an oil bath for smooth and quiet operation.

Limit Switches

Mechanical adjustment for accurate gate stop settings.

Cover

High-impact resistant charcoal gray polyethylene.

Cover Dimensions

H: 27" L: 16" W: 16 1/2"

Finish

Gold/Zinc plated to inhibit corrosion.

RAM 5500

Commercial / Industrial



Emergency Foot Pedal Release

This mechanism disengages the gate from the operator to allow easy manual opening and closing of the gate during power outages and emergencies.

RAM 1000

Commercial / Industrial



Emergency Foot Pedal Release

This mechanism disengages the gate from the operator to allow easy manual opening and closing of the gate during power outages and emergencies.

SPECIFICATIONS

MAXIMUM GATE WEIGHT: 1000 lbs
MAXIMUM GATE TRAVEL: 45'
GATE TRAVELING SPEED: Approx. 1' per sec
CYCLES: Continuous. SHIPPING WEIGHT: 125 lbs
OPERATING TEMPERATURE: -10° F to 160° F

Electric Motor

1/2 Hp, 120 VAC. 4.5 amp.
50/60Hz. with high speed ball bearings and resettable overload button.

Heavy Duty Worm Gear

Lubricated in an oil bath for smooth and quiet operation.

Limit Switches

Mechanical adjustment for accurate gate stop settings.

Cover

High-impact resistant charcoal gray polyethylene.

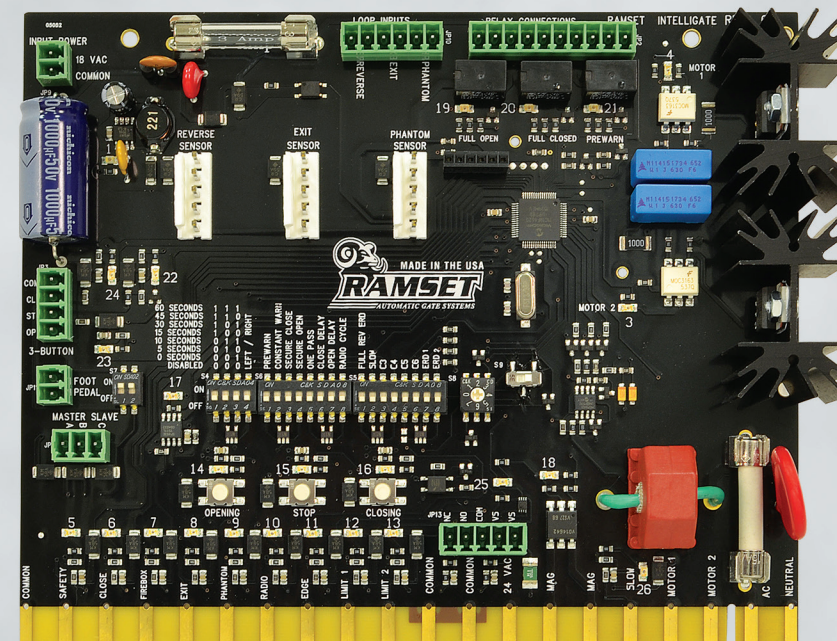
Cover Dimensions

H: 26" L: 16" W: 16 1/2"

Finish

Gold/Zinc plated to inhibit corrosion.

RAMSET "Intelligate" Control Board



The Intelligate control board is the most advanced gate controller in the industry, putting Ramset ahead of the competition when it comes to reliability and number of features. It is controlled by a programmable microprocessor that reads and precisely executes all functions of the control board. Some of the features of the control board:

- * Automatic close timer
- * Pre warning alarm relays
- * Constant warning alarm relays
- * Manual or self adjusting ERD
- * Dual gate communication capability
- * Secure close
- * Anti-tailgating/One pass system
- * Radio cycle (open, stop & close)
- * Open & close delays
- * Indicator lights for easy troubleshooting
- * Plug in loop detectors
- * Left/Right installation switch