

RPI-TL

12V DC TO 120VAC POWER INVERTER



- ☑ (16.6 milliseconds) Automatic Transfer to Battery-Derived AC Output
- ☑ 750 Watts (continuous) / 1500 Watts (peak)
- ☑ 3 Stage, 20 AMP Selectable Wet/Dry Battery Charger
- ☑ Battery Monitoring
- ☑ Overload Protection
- ☑ AC Surge Suppression - 450 Joules
- ☑ Limited 2 Year Warranty

** battery not included*



ADDITIONAL ACCESSORIES



LCD-KP

LIQUID CRYSTAL DISPLAY-KEYPAD

1,024 codes • 5,112 event log
LCD display • 7-day timer
Time Zones • Latching
Stainless Steel Faceplate



UPHILL ARMS

1" X 2" rectangular
12 ga. steel tubing anodized
with heavy duty ball joints
for flexibility.



FIRE BOX

Allows the fire department
to open the gate in the
case of an emergency.



KEY SWITCH BOX

Suitable for use on
Entry doors where access
is restricted by a key.



MAGNETIC LOCK

12/24V DC.

1100 lb holding force.
Secures the gate(s) closed.



POST MOUNTS

1/4" angle iron flats.
3/16" square tubing legs.
Used to mount the
operator off the ground.



BBS-BATTERY

BACK-UP SYSTEM

1000 lb capacity. Opens the
gate when power is lost.



ILD-24S

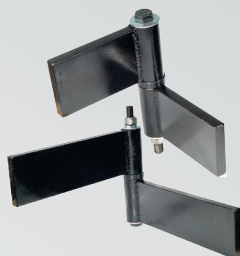
LOOP DETECTOR

Plug-in loop detector with
sensitivity adjustment and
inherent loop diagnostics.



GOOSE NECKS

Square - 16 ga. Available
in 48" pad-mount or 66"
in-ground. Used for mounting
keypads, phone entry systems,
card readers...etc.



UPHILL HINGES

Heavy duty hinges used
for uphill swing gate
applications.

RAMSET AUTOMATIC GATE SYSTEMS

9116 De Garmo Ave. Sun Valley, CA 91352

Tel: (800) 771-7055 • Fax: (818) 504-1141